

2 CPD Credits: ECSA

SAICEcon23/03285/26 / SAICEEL23/03286/26

1.6 CPD Credits SACPCMP
SACPCMP/CPD/24/167

CPD
Validated

Getting Acquainted with Planning, Scheduling and Programming for Construction Projects

A two-day course to introduce and improve skills in **construction project planning, scheduling and programming**



Attend this course and learn about:

- Comprehending Planning
- Understanding the Work Breakdown Structure and the Critical Path
- Creating a Schedule (Programme)
- Prevention and Mitigation of Delays

Benefits include:

- Participation in an interactive workshop
- Learn from a recognised expert with cross industry experience
- Comprehensive course material
- CPD credits (ECSA)
- CPD credits - Category PPPI (SACPCMP)

Please note this course is not a Project Management course. This course focuses on how to plan, how to create a work breakdown structure and how to create a programme (Project Schedule). This programme is a major part of the project as it is used for tendering, controlling costs, determining delays and setting a completion date.

Presenter:

Theuns Eloff BIng(Civil)

COURSE DATES & VENUES

Scheduled courses are offered online and face-to-face around the country based on demand.

Please contact Lizelle du Preez for more information on upcoming courses: Lizelle@saicepdp.org / 011 476 4100

TIMES: 08:00 for 08:30 to 16:30

REGISTRATION

To register, visit www.candidateacademy.co.za
OR email Academy@saicepdp.org

WHO SHOULD ATTEND

The course helps graduates apply their theoretical training in practice. It is therefore recommended for:

- Project planners, project managers, site agents, engineers representatives, project leaders, PMU members, quantity surveyors, SCM members, contractors, consulting engineers, clients
- Candidate engineers, technologists and technicians
- Senior engineers in the civil construction industry in need of a refresher

COURSE CONTENT

INTRODUCTION

- What is planning, scheduling and programming?
- Why is planning and programming important?
- When do I use it?
- Who should use it?
- Definitions and Terminology

CONTEXTUAL FRAMEWORK

- Role-players and Project Management
- Contracts: Types, Forms, Documents and Strategies
- Standards, Specifications, Legislation and Regulations

GENERAL CONCEPTS

- Scope of Work
- Project Definition
- Establishment and P&G's

PLANNING

- Drawings and Investigations
- Outline Plans and Strategies
- Work Breakdown Structure, Task List
- Activities and Planning Logic
- Obstructions, Unknowns, Risk Minimisation

PROGRAMMING

- Types of Programming (PERT, Gantt, etc.)
- Critical Path Method (CPM)
- Float, Lag, Lead, TRA, Finish to Finish etc.
- Baseline Programme
- Detailed Programming including Resource Levelling

CONSTRUCTION PHASE

- Keeping to the Milestones and Programme Revision
- Disruption and Acceleration Claims
- The S-Curve
- Change Management and Fast Tracking
- Cost Control
- Controlling and Ownership of the Float

COMPLETION

- Practical Completion and Extension of Time
- Penalties
- Close out Report

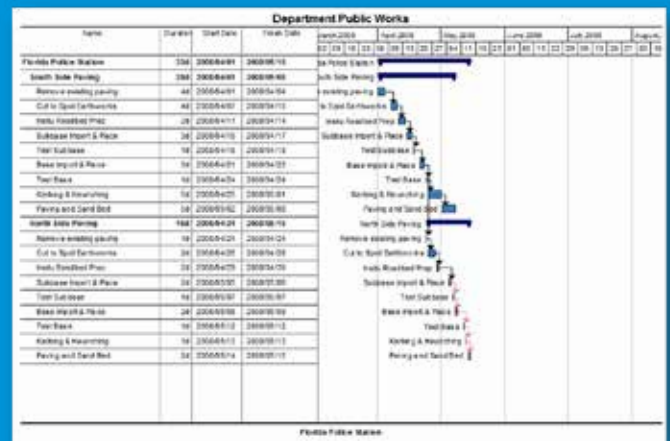
ABOUT YOUR FACILITATOR

Theuns Eloff completed his BEng(Civil) degree at UJ (RAU) and started his engineering career as a civil contractor. He was involved in the construction, rehabilitation and resurfacing of roads and has extensive experience in major earthworks, construction of dams, open cast mines and contract management.

In-house courses can be arranged. Contact Lizéle at lizelle@saicepdp.org for more information.

WHAT TO BRING TO THE COURSE

Calculator
Laptop with Excel recommended for online courses



The Candidate Academy's philosophy is to support candidates on their road to registration with ECSA, by helping them through the transition from theoretical training to the 'how' of engineering projects and processes. The Academy offers practical, hands-on training relevant to experiences in the workplace.

